

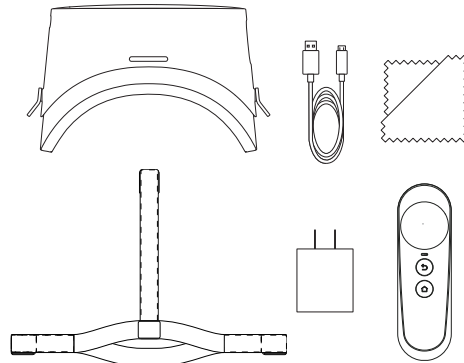


DPVR-4D Pro

Handling instructions

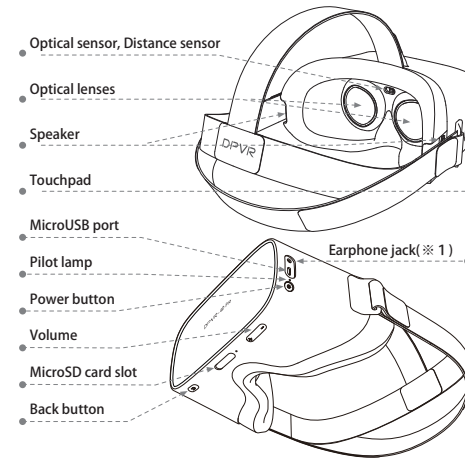
The images and contents of this instruction manual may differ from the actual product.

What's included in the package	DPVR-4D Pro Main Unit
	USB cables
	Lens cleaning cloth
	Adapter
	Controller
	Manual and Warranty



-1-

Description of button function and interface



Button type	Overview of Functions
Power button	Long press for 2 seconds: Power on/off Long press for 8 seconds: Force close Short press: Standby/Exit standby
Back button	Long press for 2 seconds: Return to Home Short press: Back to previous
Touchpad	Swipe: Scroll or switch pages Tap: Select
Volume keys	Volume control

-2-

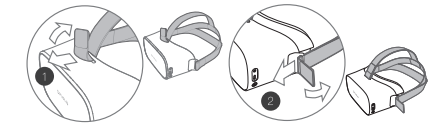
Interface	Description.
MicroUSB connector	USB2.0 B type microUSB connector for data communication and charging with external devices.
Earphone jack slot	3.5mm earphone (functions such as volume control/playback/pause cannot be operated via cable)
microSD card slot	Remove the slot cover and insert the microSD card. When pulling out the SD card, push it in once and pull it out with the part that has popped out.

(※ 1) This unit is equipped with a speaker. If you are concerned about sound leakage, please use the included earphones or your own headphones.

Pilot lamp color	Condition
Blue light	Startup in progress/normal operation
Green light	Charging complete
Red light	Low battery
Yellow light	Charging
switching off the light	Power off/standby state

Attachment and adjustment of straps

1. Insert the end of the strap into the gap between the cushion at the top of the main body and the main body and pass it through. Then, fold it back and fasten it.
2. Pass the straps through the left and right sides as above and fix them in place.

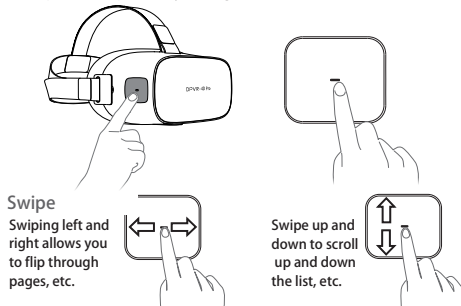


-3-

Touchpad functions

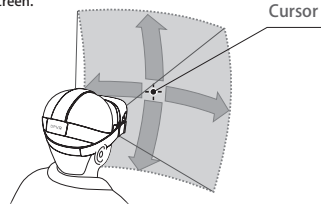
Tap

1. Move your head and hover the cursor over the area you wish to select.
2. Tap the touchpad with your finger.



About cursor position

The device detects head movements and displays the cursor position on the screen.

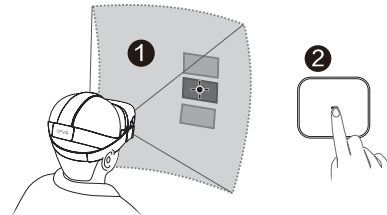


-4-

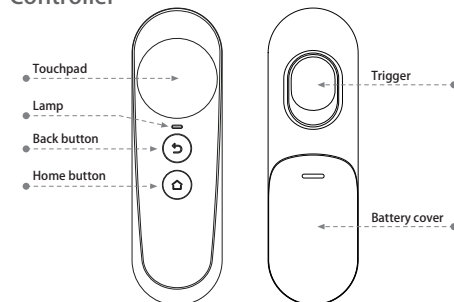
Selection method

Move your head and tap the touchpad to select applications, options, etc.

1. Move your head to move the cursor to the position you want to select.
2. Tap the touchpad (located on the right side of the device)



Controller



-5-

Controller description

Product overview

Product name	DPVR Bluetooth Controller
Product model number	BC301
weight	45g
Size	12mm×37mm×34mm
Connection method	Bluetooth
Battery	2XAAA

Button type

Home button	Tap to return to home page. Adjust controller position by pressing and holding for 2 seconds. Press and hold for 5 seconds to turn the controller on and off.
Back button	Tap to return to previous screen.
Touchpad	Swipe to scroll through pages. Tap to determine.
Trigger	Press to determine.

Lamp status

White light flashes (once per second)	Unconnected
White light comes on	connecting
White light goes out	connection complete
White lamp lights up momentarily	When the button is pressed
Lamp flashes rapidly(2times per second)	Total battery low

Connection method

- Make sure the Bluetooth function of the head mount is turned on.
- Press and hold the "Back" and "Home" buttons simultaneously until the controller is recognized. until the controller is recognized. The white light will turn off after the connection is established.
- White light flashes when controller fails to connect (once per second)
- If the white light goes out but the device is not connected, check for signal interference from other devices. Stop connecting other devices and reconnect them.

-6-

For your safety

To prevent malfunction of your health or device, please read the following before using this product.

Please read the following safety precautions to prevent fire or other accidents.

- Do not subject the product to physical shock(Collision, fall, etc.).
- Peripheral equipment should be genuine or approved products.
- Do not touch the device with wet hands. Do not use the device in wet environments (bathrooms, swimming pools, etc.).

To prevent damage to your device, please read the following precautions

- Do not install or store in excessively high or low temperatures. Use in an indoor temperature range of 0°C to 40°C is recommended.
- Charging in an ambient temperature below 0°C or above 40°C may damage the device.
- When the device is not in use, store it in a cool, dry place. Do not expose the lens to direct sunlight or strong light sources.
- Please do not use outdoors on rainy days.
- Do not use earphones or headphones at high volume or for long periods of time as this may cause hearing loss.
- Use of the device by minors under the age of 13 is not recommended. If the device is to be used by minors under the age of 13 or by seniors over the age of 65, parents/guardians are requested to limit the duration of use and to take reasonable breaks.

-7-